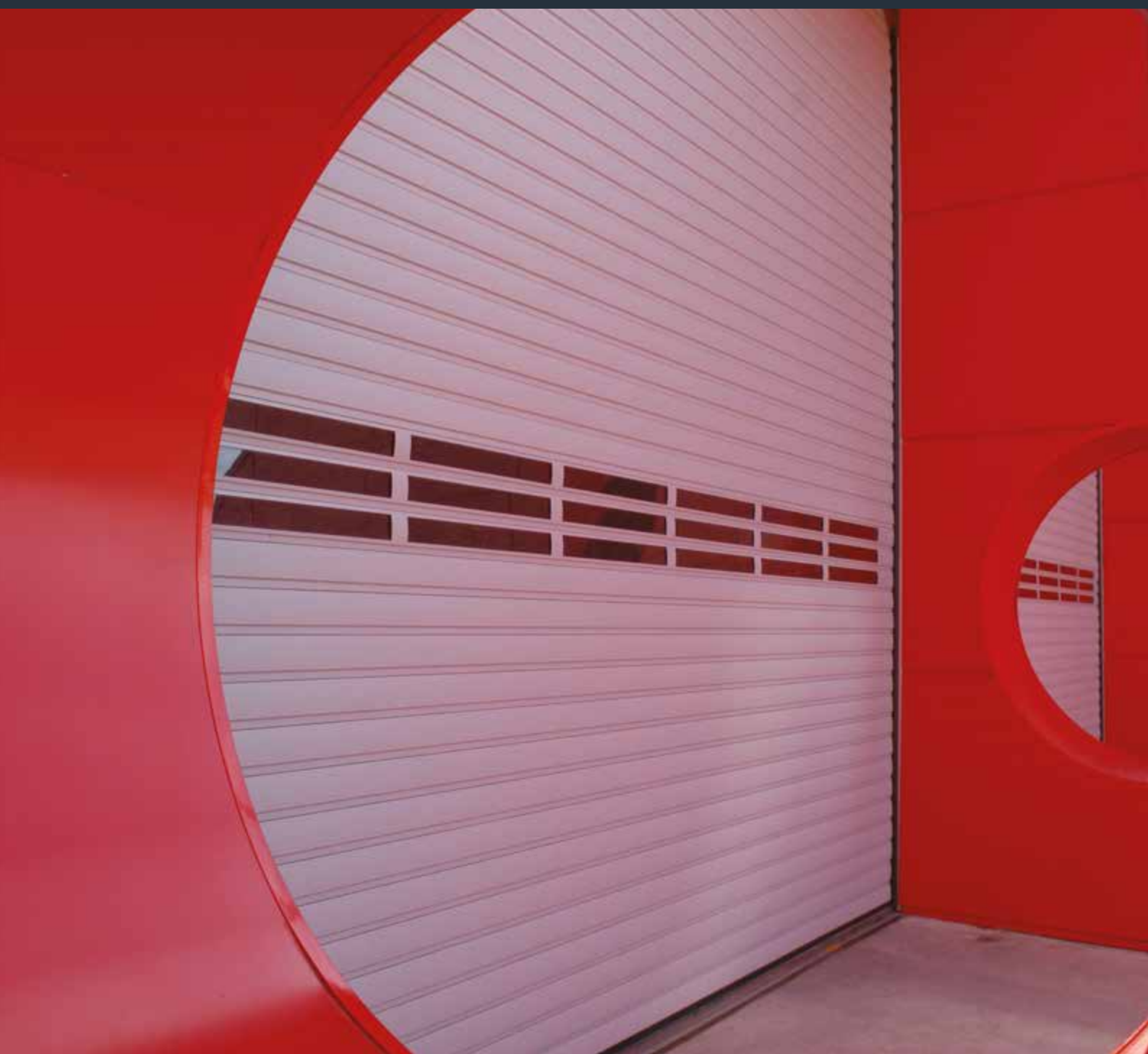




BIOROL S.A.



www.biorol.gr

**Industrial
Rolling Shutter**



The great challenge of Biorol from the first day of its institution was the development and evolution of an innovative philosophy which would have anthropocentric and customer base.

Looking at today's leading position in this specific sector as well as the high esteem gained by its customers, one can easily realize that the challenge has been met.

Investing in a stable workforce, which works daily under excellent working conditions and generally within an environment where high respect dominates as well as the development and rewarding of work, we have managed to establish the most appropriate production and distribution conditions of products.

At the same time we have managed to build an ideal system of values with strong foundations, where responsibility and respect for the consumer dominates, placing the customer at the center of developments meeting his needs and requirements through an interactive relationship of trust and integrity.

A photograph of two people in business suits shaking hands. The person on the left is wearing a dark blue suit, and the person on the right is wearing a dark pinstriped suit. They are standing in front of a blurred cityscape. The text "Feel the trust" is written in a cursive font over the handshake.

Feel the trust



“

*“All
Biorol SA
company
products
are man-
ufactured
with
certified
quality”*



CERTIFICATIONS

All doors are developed and manufactured by BIOROL S.A., in Greece, according to the DIN ISO 9001:2008 quality management system and fulfill all the requirements of European standard EN 13241-1:2003+A1:2011 to ensure your safety. Our highly qualified employees also work intensively on new products, continual further developments and improvement to details.



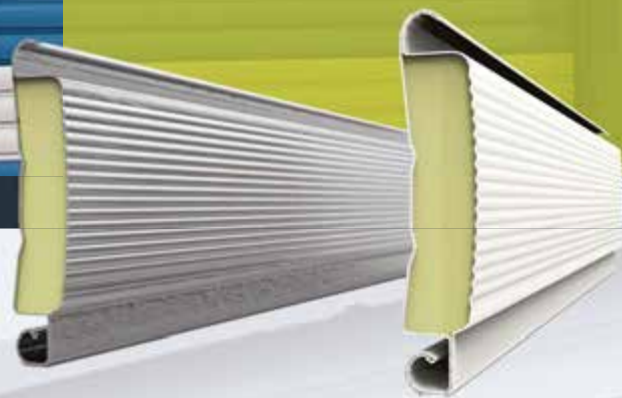
Scan this QR code to view all
BIOROL S.A. certificates

BIOROL S.A.




“

*Elegance,
Aesthetic
Design &
Quality meet
up to make
the perfect
product to
secure your
property”*



DOUBLE PROFILE in steel or aluminum

For the construction of the industrial rolling shutters, BIOROL S.A. uses only high quality and durable materials. With a wide range of choices between small and big windows, ventilation and a wide range of colors you are able to create a completely customized product that fits perfectly with your building and its surroundings.

BIOROL's mission is to provide you with all the advantages of safety, thermal insulation and soundproofing by creating a durable and elegant rolling shutter. The double sided profile filled with polyurethane is manufactured from either hot galvanized steel sheet or aluminum.

Joining great quality and unmatched design BIOROL S.A. has created a profile that is both durable and functional.



Learn more...

Certified Dimensions: CB1 Steel - W: up to 12000 - Class 4
CB2 Aluminum - W: 6000xH: 6000 - Class 3 (Normal or High Speed)
Sound Reduction: R~21dB
Thermal Transmittance: Up [W/(m²K)] 4,46





Windows

Double plexiglass (130x60mm) windows option, for lighting.



Ventilation Grills

Ventilation grills from double plexiglass (134x64mm) option, for ventilation.



Windows

Plexiglass (150x60mm) single windows on aluminum extrusion profile(40502) option, for lighting.



Windows

Plexiglass (600x64mm) single windows on aluminum extrusion profile(40502) option, when additional lighting is required.



RAL - 1013



RAL - 3000



RAL - 5010



RAL - 6005



RAL - 7015



RAL - 7016



RAL - 8014



RAL - 8017



RAL - 9002



RAL - 9006



RAL - 9007



RAL - 9016



Golden oak



Dark oak



Raw Galvanized steel

RAL COLORS

You can choose from a wide range of powder coating colours with excellent resistance to outdoor conditions and excellent colour retention that meets the requirements of all major European architectural standards. Also, two wood imitation plasticized colors are available.

Powder coatings are color. But powder coatings of artistic quality are our matter.

Environment Friendly

Certified by Qualicoat and GSB - TGIC free

“

*Suitable for
warehouses,
facilities, as
well as any
place that
must be
restricted
and fully
secured”*



BIOROL S.A.

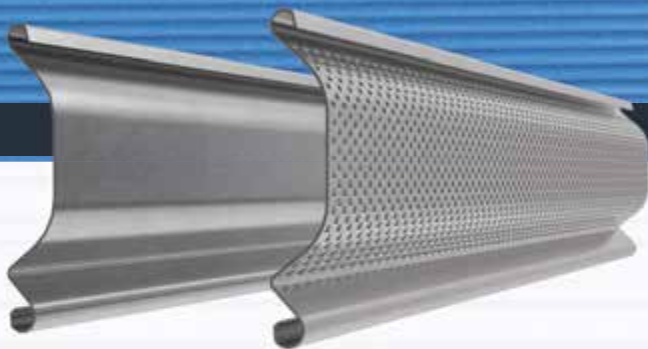


B113 - Pastore



B113C - Pastore Curved

SINGLE PROFILES



B95 - Antitebesta



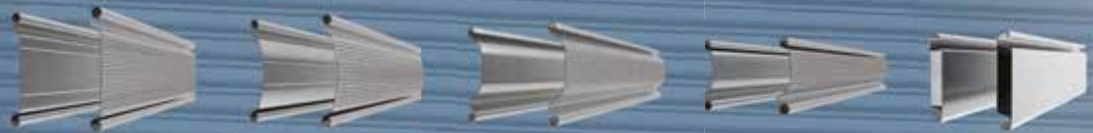
B71 - Antitebesta

SINGLE STEEL SHEET PROFILES

Hot galvanized steel sheet profiles, suitable for warehouse, garage or shop security. In your absence rolling shutters can effectively protect your property.

The perforated version of the profiles is quite useful as it combines in-store vision, ventilation and maximum security.

You can choose from a wide range of powder coating colours with excellent resistance to outdoor conditions and excellent colour retention that meets the requirements of all major European architectural standards.



Profile Name	B113	B113C	B95	B71	DB
Height/Step (mm)	128,5/113	128,5/113	82,5/71	82,5/71	129,7/113
Thickness (mm)	0,8/1,0/1,2	0,8/1,0/1,2	0,8/1,0/1,2	0,8/1,0/1,2	0,8/1,0
Weight (kg/m)	1,15/1,43/1,72	1,15/1,43/1,72	0,98/1,23/1,48	0,85/1,06/1,28	2,3/2,88



- Choose between 25 RAL tints.
- Science of the color into the art of coatings.
- Color solution comes in harmony with the environment.

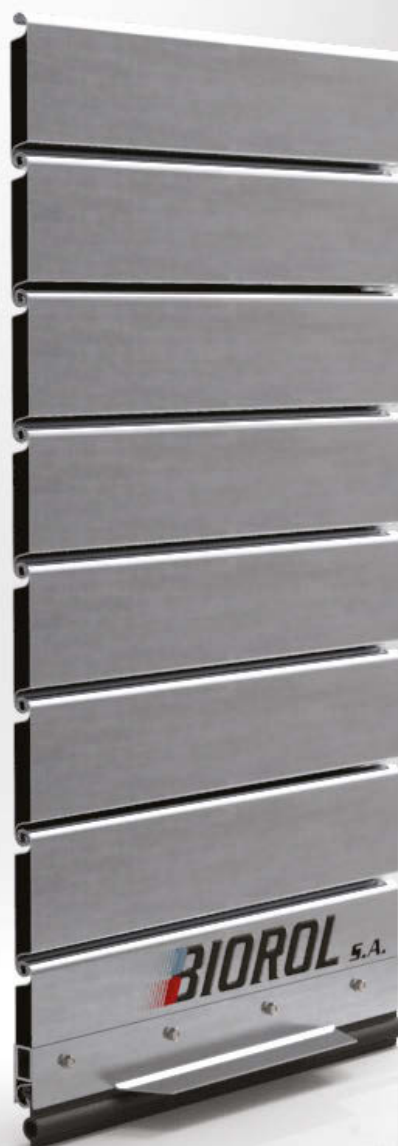


Windows can be placed on B113C profile that can be combined with any other of the profiles.

“

***“In your
absence
rolling
shutters can
effectively
protect your
property.”***

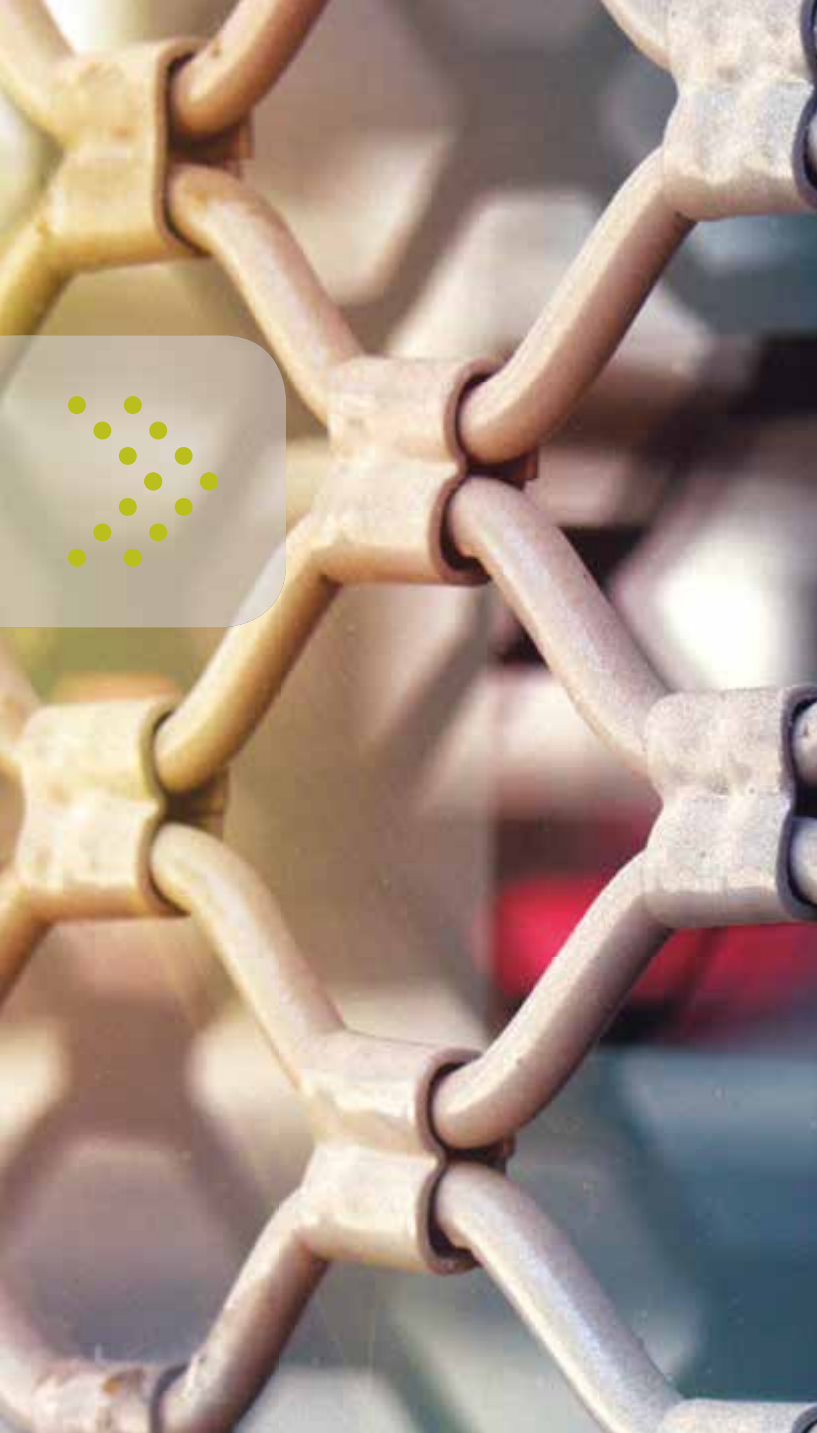
BIOROL S.A.



DB - Double Wallet

Double steel sheet profile, hot galvanized (140gr/m²) that is made with two steel sheets that slide one into each other. The inner space that is created can be filled with an insulating material (optional). Double Wallet profile is commonly used in shops but is usable in any other facility. You can choose from a variety of 25 RAL powder coated colors to create a rolling shutter that fits your needs.

Profile Name	DB
Height/Step (mm)	129,7/113
Thickness (mm)	0,8/1,0
Weight (kg/m)	2,3/2,88



“

“Ideal for installing in storefronts, especially jewellery shops where security requirements are stricter”

BIOROL S.A.

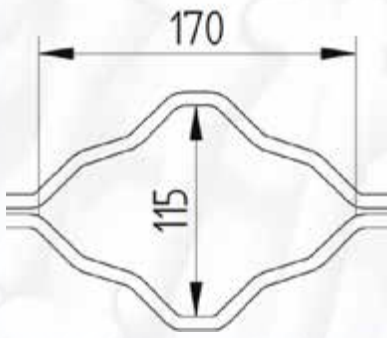
ROLLER GRILLES

Specially shaped rods of galvanized solid iron diameter Ø8mm that are linked between with special ties to create the overall net. Ideal for installation in storefronts due to the combination of high security and in-store vision.

A rolling shutter that is largely hand- assembled with great persistence and patience by experienced technical staff.

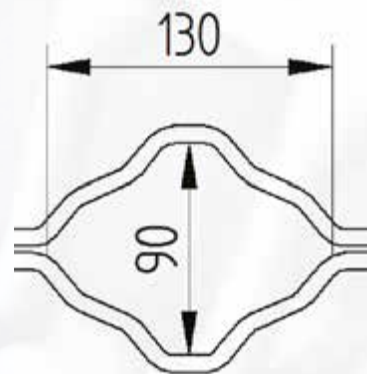
You can choose between three different patterns: Sparse (170x115) , Medium (130x90) and Dense (70x45).

You can choose from a wide range of powder coating colours with excellent resistance to outdoor conditions and excellent colour retention that meets the requirements of all major European architectural standards.



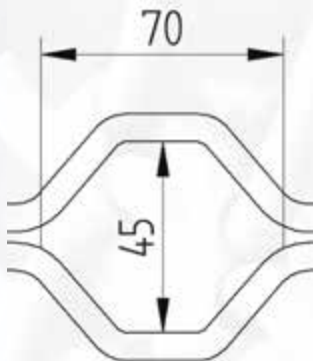
Sparse Profile

Solid Iron tube ($\varnothing 8$) with 170x115mm holes. Weight: 9,0 kg/m²



Medium Profile

Solid Iron tube ($\varnothing 8$) with 130x90mm holes. Weight: 11,4 kg/m²



Dense Profile

Solid Iron tube ($\varnothing 8$) with 70x45mm holes. Weight: 17,5 kg/m²



With a flanged shaft end for more stability and durability, BIOROL S.A. industrial shafts are made to last forever.



Specially specially designed straps that connect the shutter with the shaft.



Slip-on drive with compact design from 100 to 2000Nm. Right solution for every on-site situation.



SHAFT

The shaft is one of the most important parts in the operation of the shutter. In BIOROL S.A. we do everything in our hand to manufacture highly functional and long lasting shaft to accompany your rolling shutter. Industrial rolling shutter shafts come in five different sizes:

Ø 133(4mm), Ø 159(4mm), Ø 168(4mm), Ø 193(4mm), Ø 219(5-6mm)

Onesided Hook for double steel and aluminum profile.



Actual representation of the aluminum hook inside the guide.



HOOKS by Biorol

Aluminum Hooks for bigger shutters that need to be reinforced.

The hook is accompanied with a plastic slider that helps it to move into the guide more freely.

Patented by Biorol s.a.

Innovative and system that increases the durability of the shutter



CONTROL PANEL

When it is necessary to have wireless operation, a reliable control unit can be included. In this case a safety edge has to be fitted as well.



MOTOR

Industrial side motor capable to lift the door's weight.

Version with separated drive reduction and side safety device available for max. dimension WxH 7000mmx5000mm.

Version with intergrated safety device up to W: 12000mm.

Both drives with manual(emergency) operation with clutch or chain.

“

Three-sided box that protects the shaft and the motor from external damage.”



GUIDES

Special shaped guides with various cross sections of 1,5mm or 2mm thick galvanized steel sheet, with integrated rubbers and brushes to reduce thermal and air losses and help with sound reduction. Guides can be painted with the same color as the rolling shutter.



Guide “Omega” with lip

Dimensions	80x80x2mm	110x80x2mm
Weight	4,7kg/m	5,5kg/m
Max. Length	12m	12m



Guide “Omega”

Dimensions	60x80x1,5mm	80x80x2mm	100x80x2mm	120x80x2mm
Weight	2,5kg/m	4kg/m	4,5kg/m	5,6kg/m
Max. Length	5m	5m	5m	5m



Guide “U”

Dimensions	40x30x2mm	60x30x2mm
Weight	1,8kg/m	2,4kg/m
Max. Length	5m	5m



BUTTON

Control box in a separate housing with 3-push buttons on the lid and 5m cable

“

Curved edges on the top side of the guides so the shutter can slide in nice and easy”





Secure your facility with Industrial Rolling Shutter series by BIOROL S.A. A product designed specifically to cover anything you will ever ask from a rolling shutter. Elegant , durable and customized according to your needs BIOROL S.A. rolling shutter will leave you with nothing less than satisfaction.

ELECTRONICS & MOTORS



Control panel with internal receiver for remote controlling of the shutter.

Remote controllers for you and your colleagues so you can control the shutter from distance.



Photocells can be used to avoid any unwanted accident and to ensure a safe operation of the shutter.

LED lighting is available so you can actually signal when the shutters is operating.



Proper motor is choosed depending on the dimensions and the weight of the rolling shutter.



Safety edge in conductive rubber can be used to avoid accidents during the closing of the shutter.





ROLLING SHUTTERS - GARAGE DOORS -
INDUSTRIAL DOORS - AUTOMATIONS -
METAL CONSTRUCTIONS

10th km Katerini - Thessaloniki, GR 60062
Tel: +30 23510 41860 Fax: +30 23510 42252
www.biorol.gr email: info@biorol.gr

 **BIOROL** S.A.

